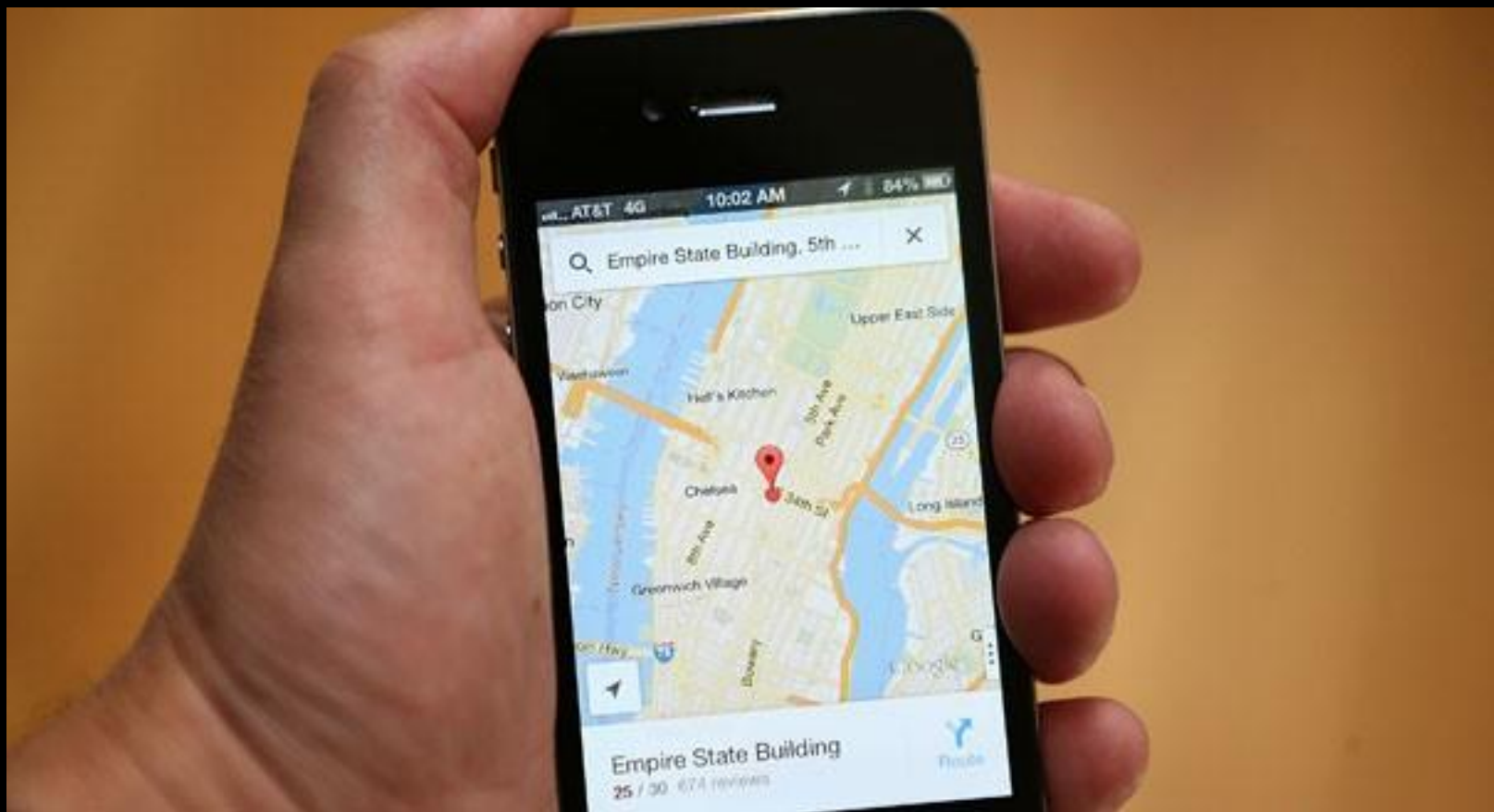
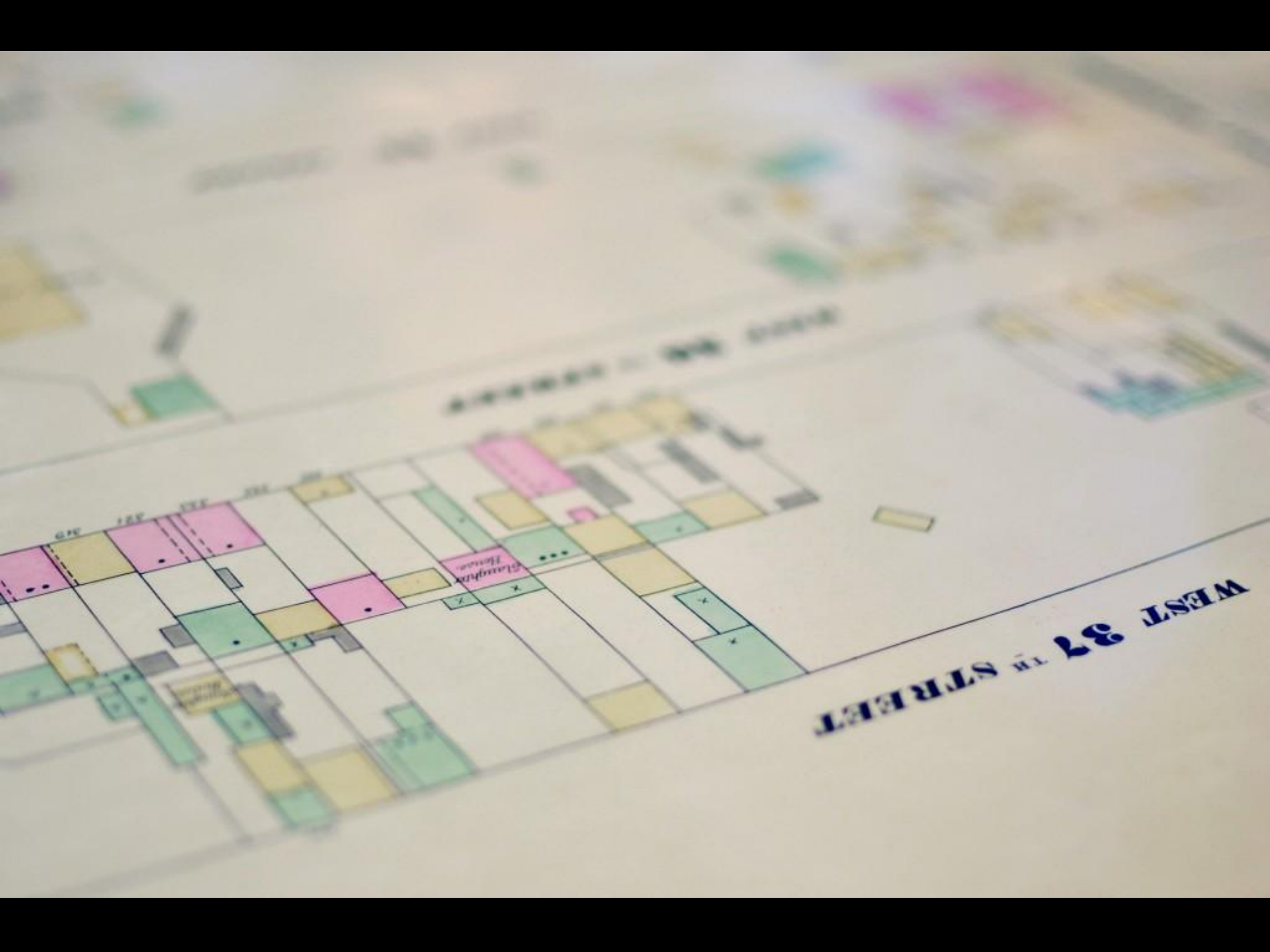


The Library As Digital Co- Laboratory



Ann Thornton
The New York Public Library
May 12, 2015





WEST 37TH STREET

STAMPHUR HOUSE

STAMPHUR HOUSE

614 124 132 134 136 138 140 142 144 146 148 150 152 154 156 158 160 162 164 166 168 170 172 174 176 178 180 182 184 186 188 190 192 194 196 198 200 202 204 206 208 210 212 214 216 218 220 222 224 226 228 230 232 234 236 238 240 242 244 246 248 250 252 254 256 258 260 262 264 266 268 270 272 274 276 278 280 282 284 286 288 290 292 294 296 298 300 302 304 306 308 310 312 314 316 318 320 322 324 326 328 330 332 334 336 338 340 342 344 346 348 350 352 354 356 358 360 362 364 366 368 370 372 374 376 378 380 382 384 386 388 390 392 394 396 398 400 402 404 406 408 410 412 414 416 418 420 422 424 426 428 430 432 434 436 438 440 442 444 446 448 450 452 454 456 458 460 462 464 466 468 470 472 474 476 478 480 482 484 486 488 490 492 494 496 498 500 502 504 506 508 510 512 514 516 518 520 522 524 526 528 530 532 534 536 538 540 542 544 546 548 550 552 554 556 558 560 562 564 566 568 570 572 574 576 578 580 582 584 586 588 590 592 594 596 598 600 602 604 606 608 610 612 614 616 618 620 622 624 626 628 630 632 634 636 638 640 642 644 646 648 650 652 654 656 658 660 662 664 666 668 670 672 674 676 678 680 682 684 686 688 690 692 694 696 698 700 702 704 706 708 710 712 714 716 718 720 722 724 726 728 730 732 734 736 738 740 742 744 746 748 750 752 754 756 758 760 762 764 766 768 770 772 774 776 778 780 782 784 786 788 790 792 794 796 798 800 802 804 806 808 810 812 814 816 818 820 822 824 826 828 830 832 834 836 838 840 842 844 846 848 850 852 854 856 858 860 862 864 866 868 870 872 874 876 878 880 882 884 886 888 890 892 894 896 898 900 902 904 906 908 910 912 914 916 918 920 922 924 926 928 930 932 934 936 938 940 942 944 946 948 950 952 954 956 958 960 962 964 966 968 970 972 974 976 978 980 982 984 986 988 990 992 994 996 998 1000



THE POST OFFICE, NEW YORK.



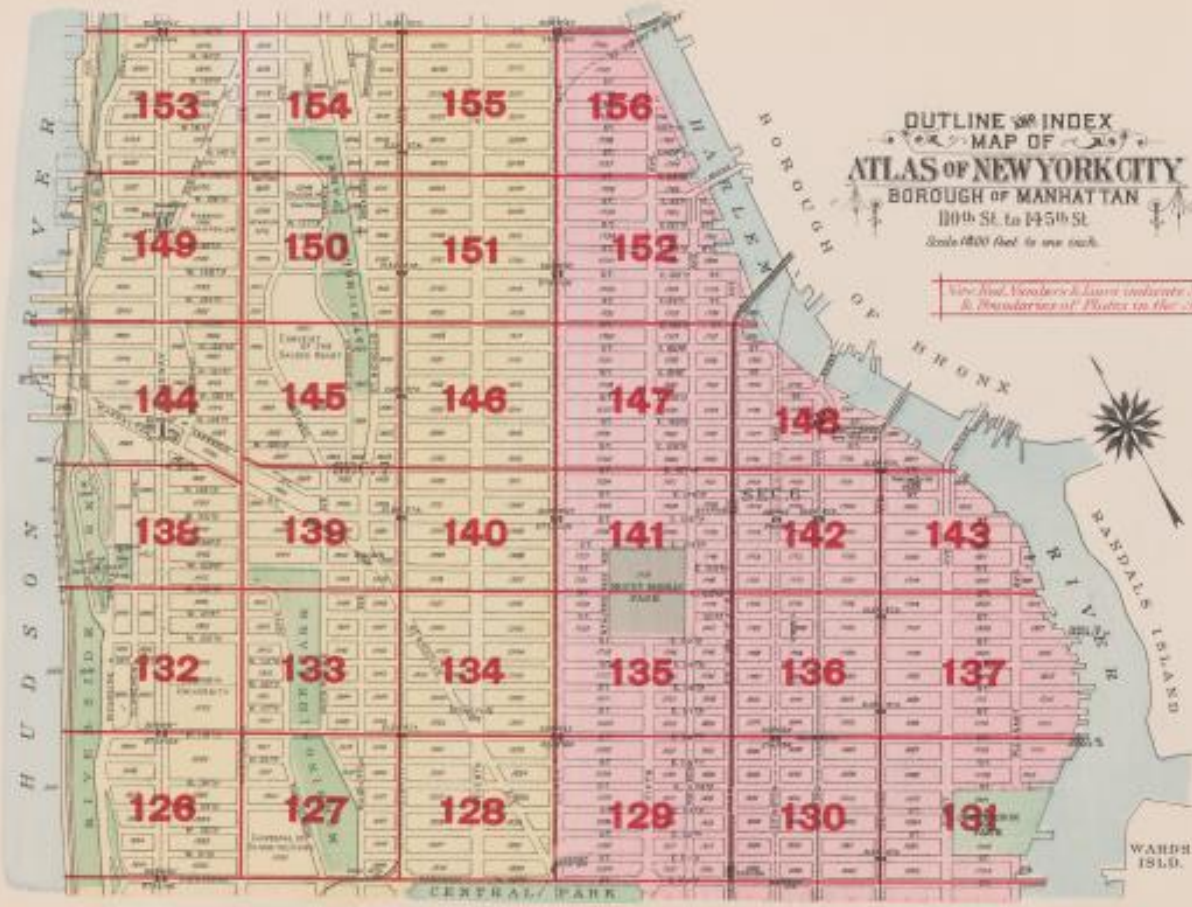


A PLAN OF STATEN ISLAND, PART OF LONG ISLAND, SEVENTEEN ISLANDS OF EAST NEW JERSEY, WITH A PLAN OF THE ENGAGEMENT ON THE WOOLLY HEIGHTS OF LOWER MANHATTAN BETWEEN THE BRITISH AND AMERICAN FORCES UNDER MAJOR GENERAL PUTNAM AND MAJOR GENERAL BURGESS, ON THE 15TH OF SEPTEMBER 1776, AND THE TAKING OF THE CITY OF NEW YORK, ON THE 25TH OF SEPTEMBER FOLLOWING, WITH THE SUBSEQUENT DISPOSITION OF BOTH THE ARMIES.

AN ACCOUNT OF THE TAKING OF THE CITY OF NEW YORK, BY THE BRITISH FORCES, ON THE 25TH OF SEPTEMBER 1776.

INDEX

EXPLANATIONS



OUTLINE INDEX
MAP OF
ATLAS OF NEW YORK CITY
BOROUGH OF MANHATTAN
110th St. to 145th St.
Scale 1/800 feet to one inch.

See Ind. Symbols & Lines indicates Symbols & Boundaries of Plates in the Atlas

- Brick Building
- Frame
- Brick Stable
- Frame
- 2 Story Building
- 3 Story & Basement
- 4 Story High with Store
- Store
- Fire Proof Building (Best construction)
- Elevator
- Depth of main Building
- This hatching covers the entire depth of lot front. Where several buildings are shown depth of depth of yard or street.
- Lot Number
- Block Number
- Block Number
- Lot Dimensions
- Block
- Water Pipe & Sewer
- Fire Hydrant
- Sewer
- Elevation above high water at intersection of street
- Street width including sidewalk
- Old Water Gains
- Old Sewer Line
- Higher Level Old Sewer Pipe
- Depth of Street Bed to Surface of Pavement
- Approaching Floor Building
- Subway and Station
- Street Railroad
- Elevated Railroad
- Elevated Station

N.Y.P.L. Map Div.

Manhattan 1916 (Bromley) Index

A. F. Kollmann
K. G. Gumbel
und Kollmann

St. Paulin
K. H. Dambach
und Pöhl

der Kappelerberg

Der Wappenstein
Löffel
Niedrig
und Pöhl
Kollmann

St. Paulin

St. Paulin



St. Paulin

St. Paulin

St. Paulin

St. Paulin

St. Paulin

St. Paulin

St. Paulin

St. Paulin

St. Paulin

CITY of NEW-YORK



PROPERTY OF THE CITY OF NEW-YORK

NEW-EAST-RIVER

INTERSECTION

NEW-NEW-YORK



PHOTOGRAPHIC VIEWS OF NEW YORK CITY, 1870'S-1970'S, FROM THE COLLECTIONS OF THE NEW YORK PUBLIC LIBRARY

Navigation

About

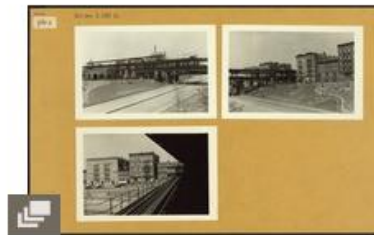
Filters

COLLECTION HISTORY

The New York City photograph collection began in the 1920s, not long after the opening of the new central library at Fifth Avenue and 42nd Street. The goal was to document the changing face of New York City, with a particular emphasis on new building construction, and on the structures torn down and replaced. The method is clear in this 1937 progress report by librarian Sylvester L. Vigilante on obtaining photographs: "The old Union League Building and site was taken care of and the erection of the new building is being covered.... Through the newspapers and tips from interested people, we get a line on demolitions, events and street changes."

34,749 results found

Sort by: [▲ Title](#) [▼ Date created](#) [▼ Date digitized](#) [▲ Sequence](#)



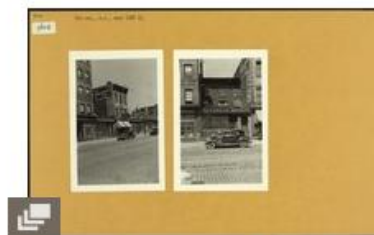
Bronx: 3rd Avenue - 135th Str...



Bronx: 3rd Avenue - 134th Str...



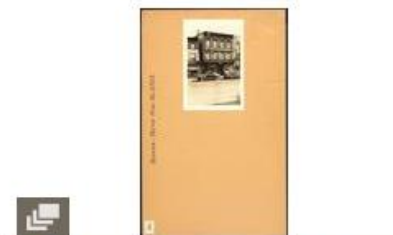
Bronx: 3rd Avenue - 137th Str...



Bronx: 3rd Avenue - 140th Str...



Bronx: 3rd Avenue - 141st Str...



Bronx: 3rd Avenue - 144th Str...

NYPL Map Warper

[Home](#) [Browse All Maps](#) [Browse Rectified Maps](#) [Browse All Layers](#) [Sign In](#) [Create Account](#)



How to use this tool



The NYPL Map Warper is a tool for digitally aligning ("rectifying") historical maps from the NYPL's collections to match today's precise maps. Visitors can browse already rectified maps or assist

Search for in all maps rectified maps only

Most Recently Rectified Maps

Map	Title	Last modified	Status
	Manhattan, V. 7, Plate No. 16 Map bounded by W. 91st St., Central Park West, W. 86th St., Columbus Ave. <i>From Atlas 120. Vol. 7, 1902. (In 4 layers) Depicts: 1902</i> View Map Edit/Rectify Map Download KML <small>Bibliographic records: Digital Gallery Digital Collections (beta)</small>	2 days ago.	9 control points.
	Manhattan, V. 7, Plate No. 18 Map bounded by W. 96th St., Amsterdam Ave., W. 91st St., W. End Ave. <i>From Atlas 120. Vol. 7, 1902. (In 4 layers) Depicts: 1902</i> View Map Edit/Rectify Map Download KML	2 days ago.	4 control points.











Bronx Topographic Bureau
Topo survey... E. of the Bronx River.
1905



G.W. Bromley & Co.
Atlas of ... Borough of Queens...
1909

Perris, William
Maps of the City of New York
1857-1862



G.W. Bromley & Co.
Atlas of... borough of Richmond...
1917

Hopkins, Griffith Morgan
...Atlas of the city of Brooklyn...
1880

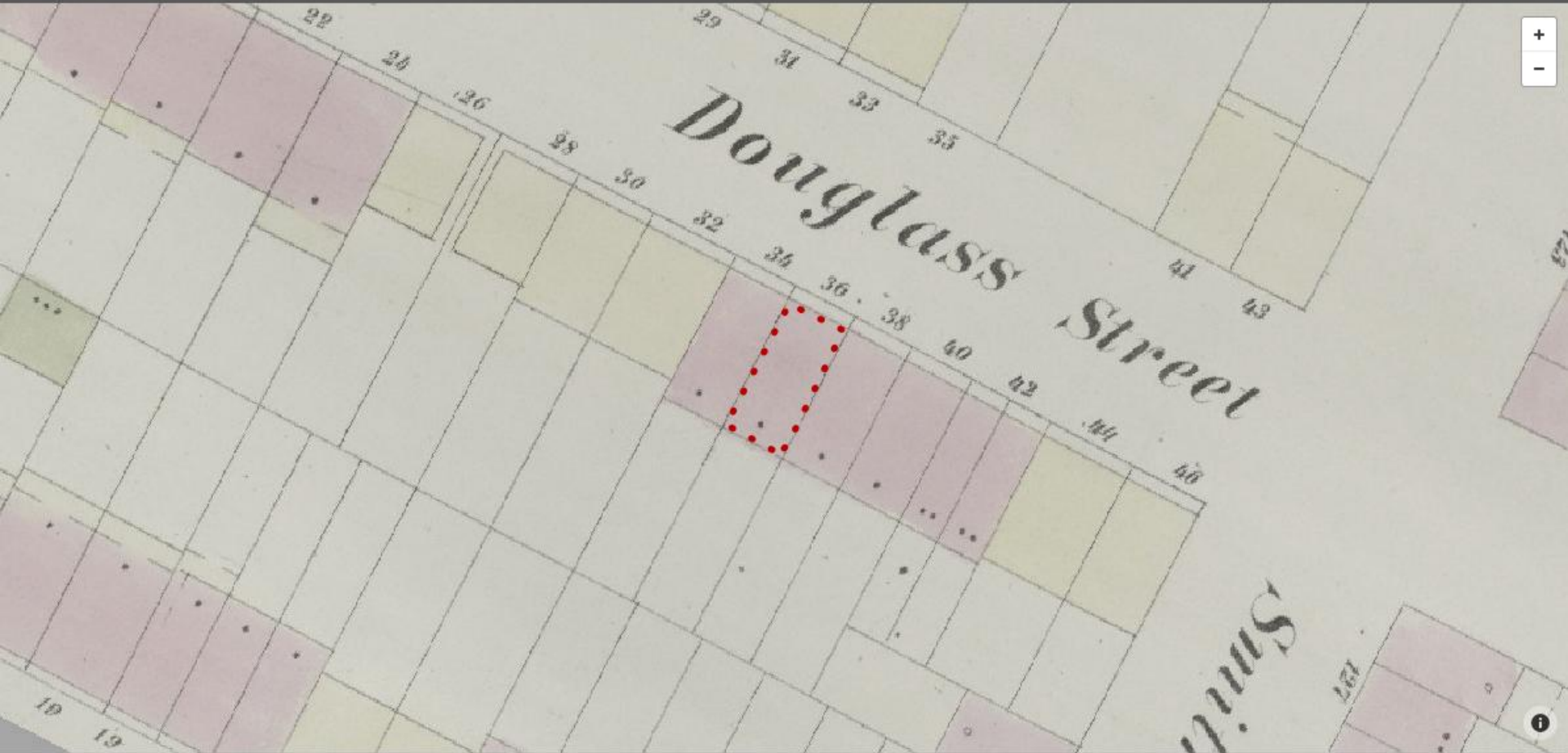




NYPL LABS

**BUILDING
INSPECTOR**

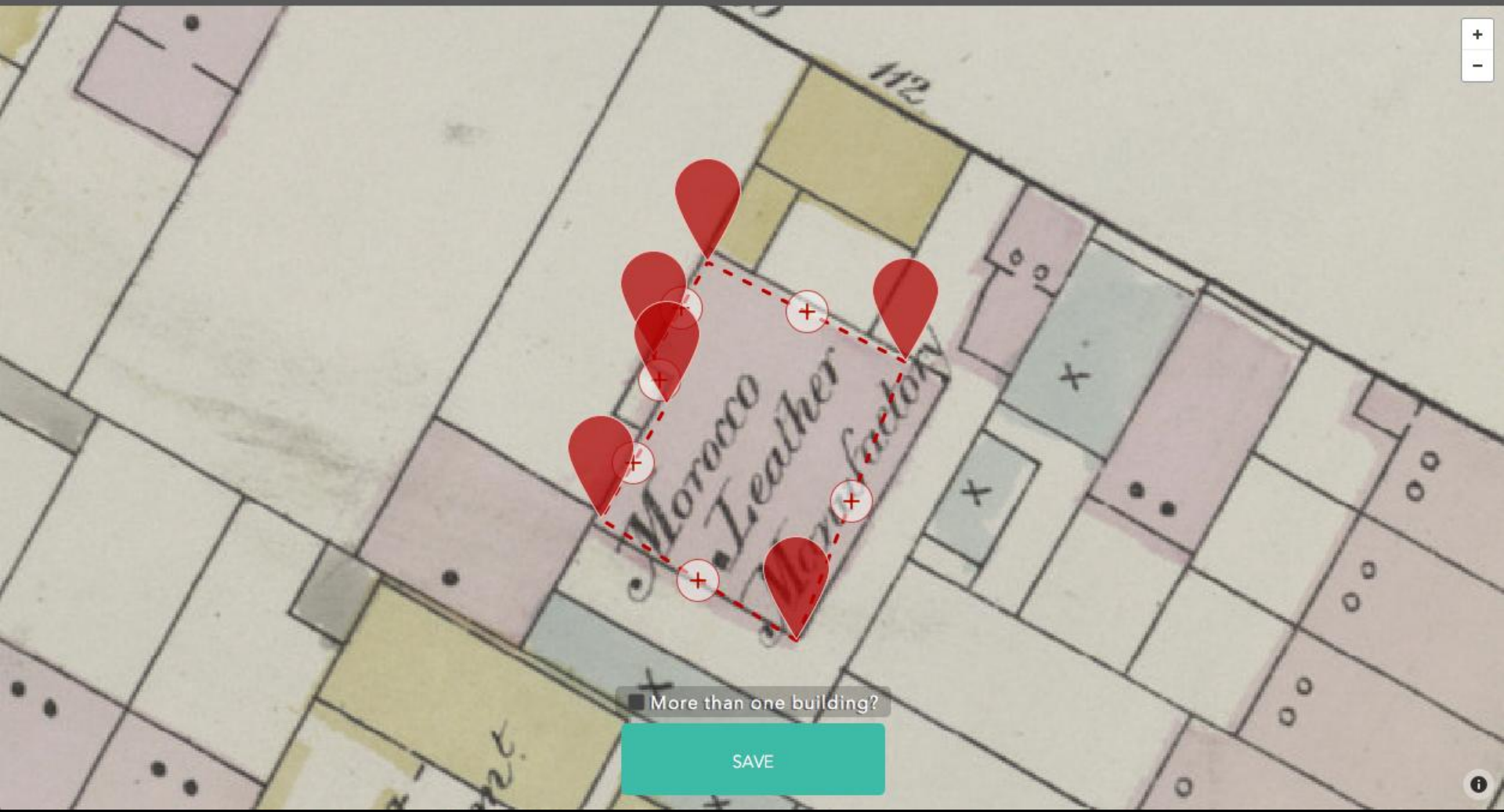
KILL TIME. MAKE HISTORY.



NO

FIX

YES



More than one building?

SAVE







An aerial photograph of New York City, showing the dense urban core of Manhattan on the left and the more spread-out areas of the Bronx and Westchester County on the right. A semi-transparent grid is overlaid on the entire image, representing a spatial coordinate system. The text 'NYC Space/Time Directory' is prominently displayed in the upper right quadrant.

NYC Space/Time Directory



CO-LABORATORY

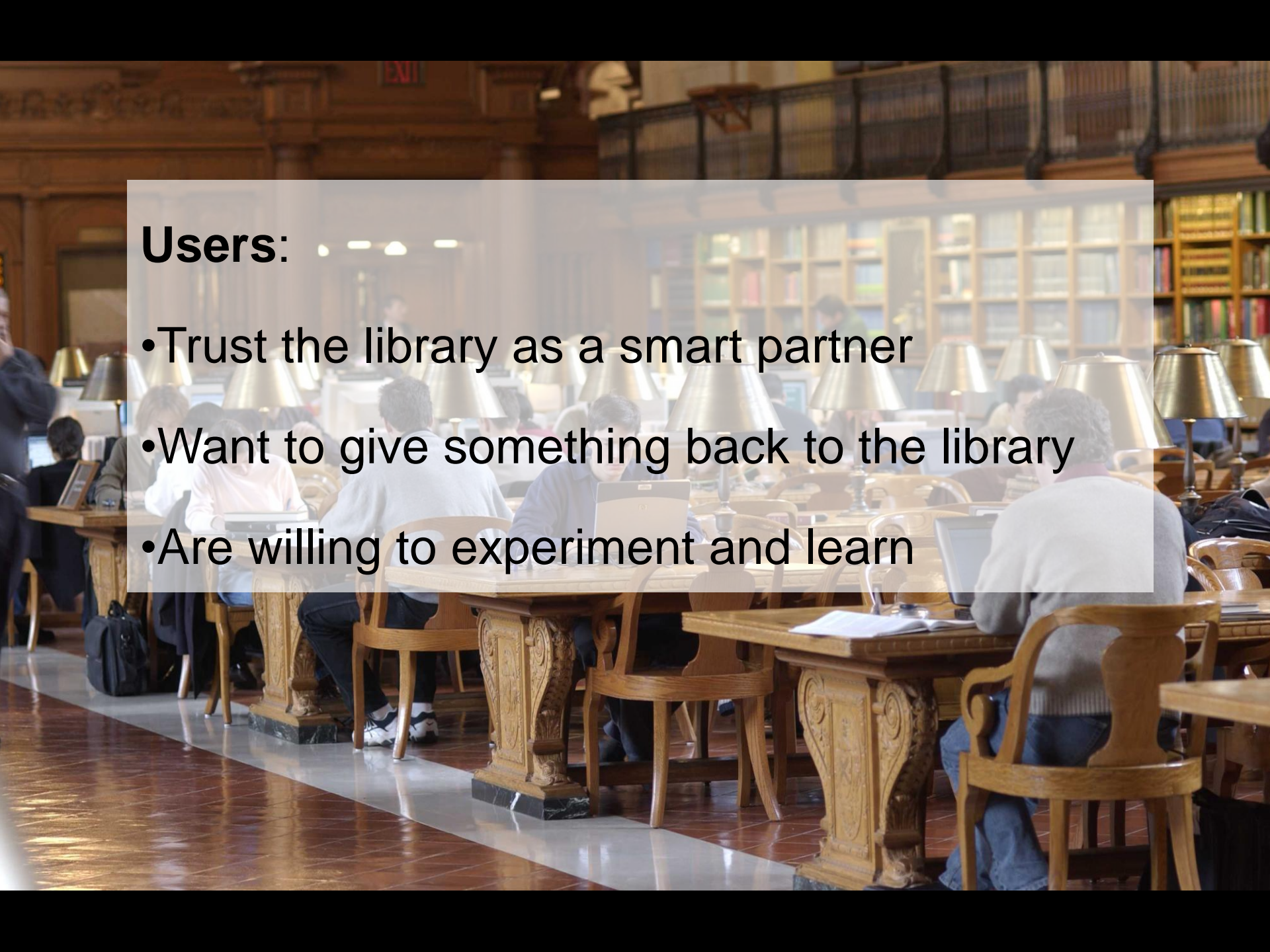
Community Building

Innovation

A photograph of a grand, historic library interior. The space is filled with people sitting at long, ornate wooden tables, engaged in study or work. The room features high ceilings with intricate architectural details, large windows, and several large, glowing chandeliers. The floor is made of polished, dark wood tiles. The overall atmosphere is one of quiet concentration and intellectual pursuit.

Libraries:

- Build it together with users
- Bring people in, let them access data/code
- Give them the resources, time, and space



Users:

- Trust the library as a smart partner
- Want to give something back to the library
- Are willing to experiment and learn

*the library is a digital co-laboratory
and digitization is only the
beginning...*



